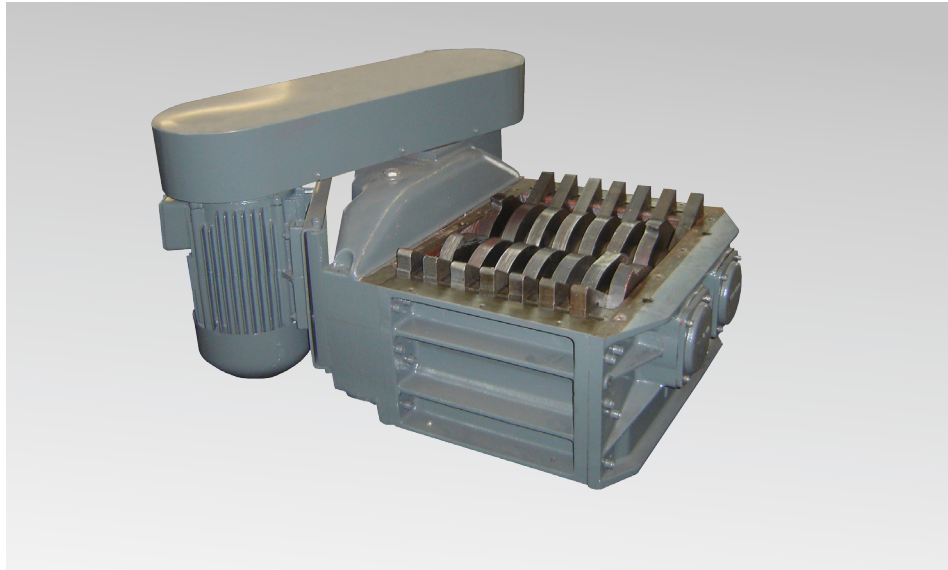


ERDWICH
TWO-SHAFT-SHREDDER

M450/2-360 M450/2-720
M450/2-420 M450/2-1250
M450/2-480



Advantages and special features:

ERDWICH M450/2

■ **Simple maintenance:**

- | Fast access to cutter shafts
- | Individually fitted, replaceable cutters, spacing rings and sweepers

■ **Savings on operating costs:**

- | Long service life guaranteed by cutters from custom blade steel, fully hardened to permit repeated re-sharpening

■ **Highly-efficient shredding:**

- | High-precision cutter assembly with cutter shapes adjusted to the material
- | Configurable population of the cutter discs on a 6-sided shaft, ensuring optimum feed-in behaviour

■ **High throughput – low drive power consumption:**

- | Tightest-possible cutter spacing, ensuring energy-saving shredding without causing machine jams
- | Special sweeper systems with self-cleaning feature

■ **Robust and long-lived:**

- | Generously dimensioned, milled cutter shafts
- | Bulkhead seals to protect the shaft bearing from liquid and aggressive materials

■ **Cost-effective, safe operation:**

- | PLC unit featuring automated reverse and power down to protect the machine against damage from overloading or solid part

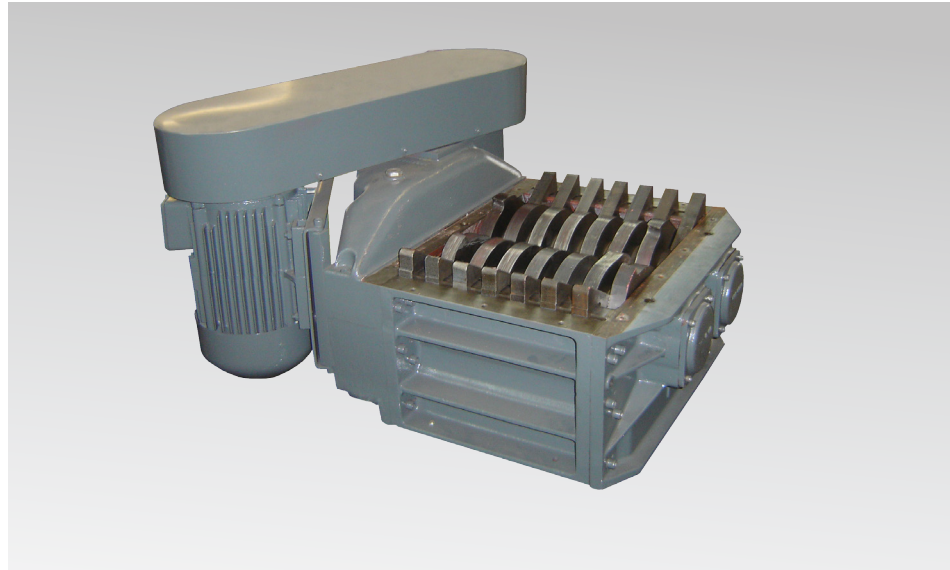


ERDWICH

... SHREDDING UNLIMITED ...

ERDWICH
TWO-SHAFT-SHREDDER

M450/2-360 M450/2-720
M450/2-420 M450/2-1250
M450/2-480



Technical Data:

Typ	Amount of stator knives	Drive power	Cutting unit size (LxW mm)	Weight (kg)	Width of rotor knife* (mm)
M450/2-360	2	5,5 - 7,5 kW	368 x 580	735	30
M450/2-420	2	5,5 - 7,5 kW	428 x 580	775	30
M450/2-480	2	5,5 - 11,0 kW	488 x 580	850	30
M450/2-720	2	11,0 kW	736 x 580	1.010	30
M450/2-1250	2	11,0 kW	1.256 x 580	1.520	30

Dimensions:						
	Dimension	M450/2-360	M450/2-420	M450/2-480	M450/2-720	M450/2-1250
Cutting unit length B	mm	368	428	488	736	1268
Cutting unit width G	mm	580	580	580	580	580
Cutting unit height A	mm	312,5	312,5	312,5	312,5	312,5
Total length C	mm	1010	1070	1130	1378	1910
Total length C*	mm	1140	1200	1260	-	-
Total width D	mm	910	910	910	910	910
Total height E	mm	601,5	601,5	601,5	601,5	601,5

Subject to technical changes.

