



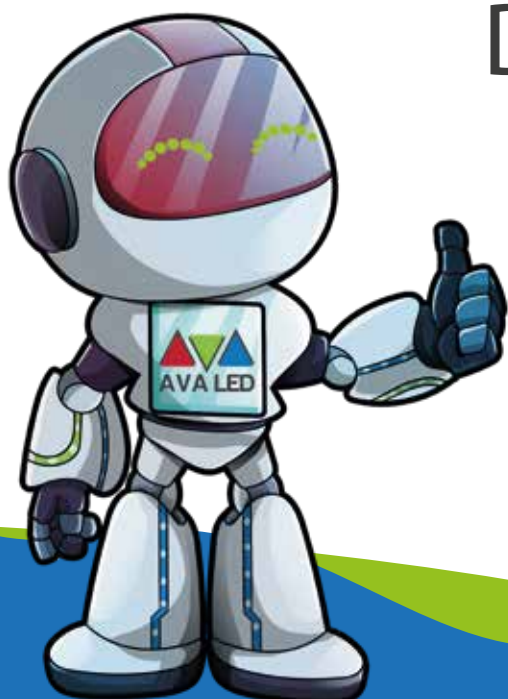
AVA LED

TK-PRO-IP-2

P2,5

Data Sheet

QUALITY IN DETAIL



INDOOR FRONT SERVICE
POSTER SERIES

TK-PRO-IP-2 "P2,5" I
TK-PRO-IP-2 "P2,5" PRO I TK-PRO-IP-2 "P2,5" PLUS





TITLE OF CONTENTS

02-04 ○ Features

05 ○ Technical Specification

06 - 08 ○ Cabinet Size - Photo

09 - 10 ○ Safety - Instalation

11 - 12 ○ Vision

13 ○ Company Info

Magnesium Die Casting Cabinet

Cabinet Size: 640x1920x70mm

Videowall Systems, Easy and Fast

Installation " Magnetic Cabinet Systems "

Front Seriveces

USB Input " Plug and Play "

HDMI Input " Plug and Play "

CAT 5 input

Wifi Commution " optional "

Lan Control with internet

4G Control " optional "

Smart Systems " IOS - Android "

1GB memory

POSTER & Videowall same Screen

TK-PRO-IP 2 "P2,5"

- Standart Refresh Rate: 1920Hz
- C Class Led Chip
- Standart PCB Quality
- High Quality MASK
- Rotation 90 Degree

TK-PRO-IP 2 "P2,5" PRO

- High Refresh Rate: 3840Hz
- B Class Led Chip
- High Quality PCB
- High Quality MASK
- Rotation 90 Degree

TK-PRO-IP 2 "P2,5" PLUS

- High Refresh Rate: 3840Hz
- A Class Led Chip
- Best Quality PCB
- Best Quality MASK
- High end Refresh Rate
- 18 Bit
- Clear View
- Free Rotation
- HDR
- 4K Refresh Rate



Features

- *** FRONT SERVICE
- *** Light Weight
- *** Magnesium Die-Casting
- *** 3 in 1 Case weight with products: 129kg.
- *** Faster Cooling
- *** Advanced and safety Lock
- *** Nova Star Controller
- *** SPACE BLACK

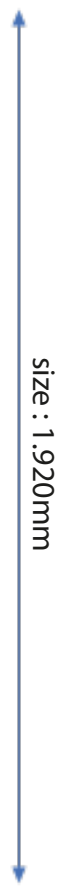
MODEL NAME	TK-PRO-IP-2 "P2,5"	TK-PRO-IP-2 PRO "P2,5"	TK-PRO-IP-2 PLUS "P2,5"
Version	"P2,5"	PRO "P2,5"	PLUS "P2,5"
Pixel Pitch	2,5mm	2,5mm	2,5mm
Pixel Configuration	SMD2020	SMD2020	SMD2020
LED	Space Black	Space Black	Space Black
Processing	16 Bit	16 Bit	-
Processing	-	-	18 Bit
Pixel Density / m2	160000	160000	160000
Resolution/SQM	400 x 400	400 x 400	400 x 400
Cabinet Resolution 640x1920mm	256 x 768	256 x 768	256 x 768
Pixel Density / Cabinet 640 x 1920	196608	196608	196608
Module Size (mm)	320x160	320x160	320x160
Cabinet Size (mm)	640 x 1920 x 70	640 x 1920 x 70	640 x 1920 x 70
Module Per Cabinet	24 MODULE	24 MODULE	24 MODULE
Module Resolution	128 x 64	128 x 64	128 x 64
Weight Per Panel Net kg. 640x1920mm	27	27	27
Rotation per 90 Degree	✓	✓	✓
Free Rotation (with R5)	○	○	✓
Mapping	✓	✓	✓
Clear View	○	○	✓
Low Latency	○	○	✓
HDR	○	○	✓
Power Consumption (<w/sqm)	570	570	570
Average Power Consumption (<w/sqm)	171	171	171
Driving Method	1/32	1/32	1/32
Brightness	>1000 Nits	>1000 Nits	>1000 Nits
Refresh Rate	>1920Hz	-	-
Refresh Rate High Refresh	-	>3840Hz	>3840Hz
Refresh Quality	Standart Quality	High Quality	Best Quality
High Refresh (PLL inside)	-	-	✓
High Refresh Power Saving	-	✓	✓
High Refresh Dynamic Power Saving	-	-	✓
Driving IC Type	Ordinary	PWM	PWM
Refrate Quality 2	Standart Quality	High Refresh	4K Refresh
No Waterless Ripple of Camera	>%50	>%75	>%90
Cabinet Material	Die-Casting Magnesium	Die-Casting Magnesium	Die-Casting Magnesium
Horizontal Viewing Angle	140 (±30)	140 (±30)	140 (±30)
Vertical Viewing Angle	140 (±30)	140 (±30)	140 (±30)
Expected LED Lifetime %50	100,000 Hours	100,000 Hours	100,000 Hours
IP Rating	IP20	IP20	IP20
PCB Quality	Best Quality	Best Quality	Best Quality
Module - Mask Quality	Best Quality	Best Quality	Best Quality
LED Chip	Class C	Class B	Class A
Picture / Video Quality	Standart	High Quality	Best Quality
Grey Scale	65536	65536	262144
Control Systems	Nova Star	Nova Star	Nova Star
Operating Temperature Range	-20 – +60 (±10)	-20 – +60 (±10)	-20 – +60 (±10)
Operating Humidity Range	-40°C~+60°C,10%-90%RH	-40°C~+60°C,10%-90%RH	-40°C~+60°C,10%-90%RH
Voltage Range	200 ~240VAC	200 ~240VAC	200 ~240VAC
Packing include	Plate-Power-Cat5 Cable	Plate-Power-Cat5 Cable	Plate-Power-Cat5 Cable
Certificate	CE/EMC/LVD-ATR-EUR1 ISO-9001:2015 ISO-14001:2015	CE/EMC/LVD-ATR-EUR1 ISO-9001:2015 ISO-14001:2015	CE/EMC/LVD-ATR-EUR1 ISO-9001:2015 ISO-14001:2015

The data written in the catalog may differ by + - 10%

CABINET SIZE



size : 640mm



size : 1,920mm

27KG.



size : 70mm



885mm

410mm

size : 2.030mm

3 IN 1
129KG.

QUALITY IN DETAIL

PRODUCT PHOTO



FAST ROTATION : 0 - 90 - 180 - 270 - 360



FRONT SERVICES

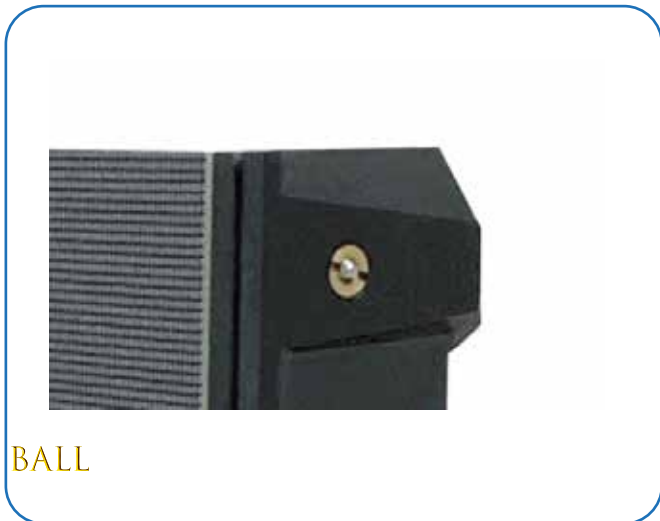
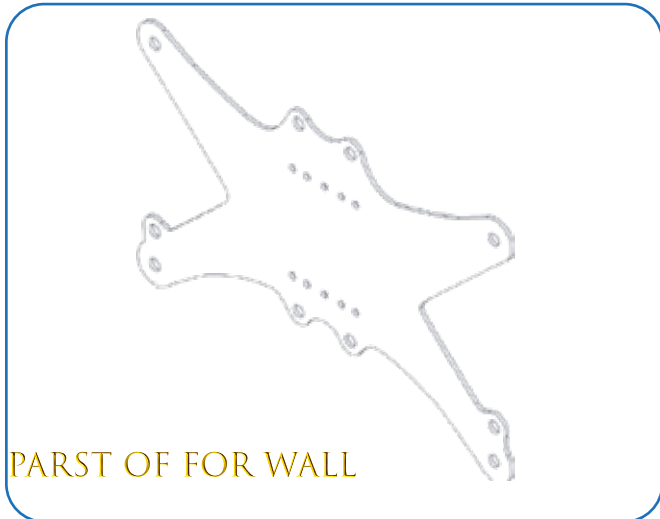
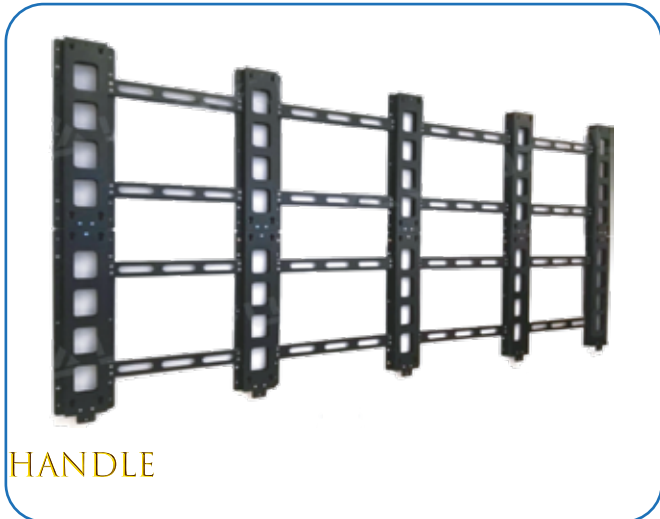




Ultra High Definition

It delivers a truly amazing picture with extraordinary pixels producing an image that is HD quality in an LED Screen. ipsum





The support structure has to be provided and installed by the customer because they vary from project to project. The following issues must be considered:

Weight tolerances: Ensure that the support structure and the floor on which or the wall against which the support structure has to be installed, is qualified to handle the complete weight of the LED display screen.(which can be provided by manufacturer.

Environmental conditions: Humidity, wind, temperatures, rain, snow etc.

Location: Outdoor/.Indoor, altitude, etc. Usually, for outdoor display screen, the customer should build top cover and side cover for IP protection (Including waterproof and dustproof)

Ground stability

Front clearances: For making sure there is sufficient free area in front of the LED display screen and respect the maximum viewing angles and distance. Local regulations regarding such installation.



ULTRA WIDE VIEWING ANGLE



Both 160° from horizontal & vertical for the viewing angle.
Seeing from five directions, it would be still the natural and clear image in an LED display.

ULTRA FAST RESPONSE



Perfect Rendering Dynamic Picture

Response speed



Smear Ghosting Phenomenon

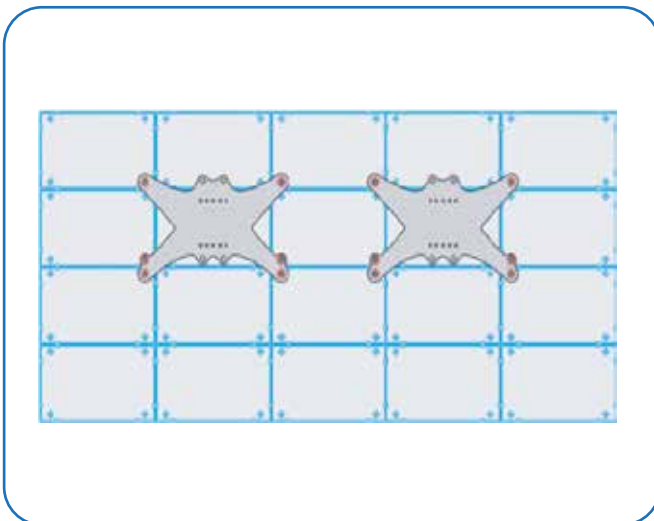
18 BIT GREY SCALE



AVA LED



Others





AVA LED

www.avaledscreen.com
info@avaledscreen.com

AVA GROUP GMBH

Adress: Goethestraße 7D - 40237 Düsseldorf / Germany

Phone : +49 211 730 64 817

